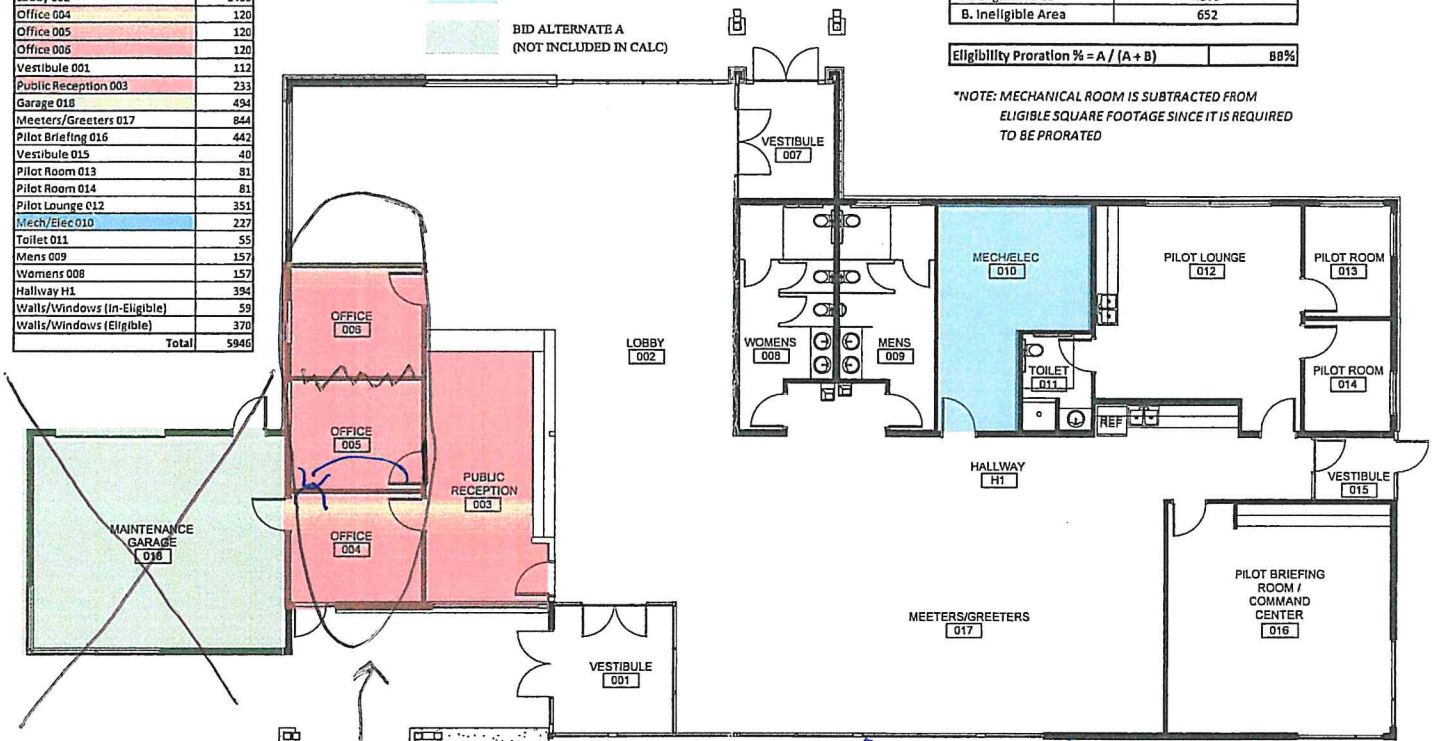


GCC GA TERMINAL AREAS	
Room	AREA (SF)
Vestibule 007	89
Lobby 002	1400
Office 004	120
Office 005	120
Office 006	120
Vestibule 001	112
Public Reception 003	233
Garage 018	494
Meeters/Greeters 017	844
Pilot Briefing 016	442
Vestibule 015	40
Pilot Room 013	81
Pilot Room 014	81
Pilot Lounge 012	351
Mech/Elec 010	227
Toilet 011	55
Mens 009	157
Womens 008	157
Hallway H1	394
Walls/Windows (In-Eligible)	59
Walls/Windows (Eligible)	370
Total	5946

- NON-ELIGIBLE AREAS
- PRO-RATED AREAS
- BID ALTERNATE A (NOT INCLUDED IN CALC)

GCC GA Terminal - Eligibility Proration Calculation	
	AREA (SF)
A. Eligible Area	4573
B. Ineligible Area	652
Eligibility Proration % = A / (A + B)	88%

*NOTE: MECHANICAL ROOM IS SUBTRACTED FROM ELIGIBLE SQUARE FOOTAGE SINCE IT IS REQUIRED TO BE PRORATED



on agenda (October 20)
 Wants to request to
 eliminate wall and
 move door

Guardin